

SMART POWER - 8L

Remote Control Surveillance Management System

Operation Manual



INDEX

一、PRODUCT INTRODUCTION.....	1
1-1 RANGE OF APPLICATION	1
1-2 MONITORING INDICATING CHART.....	1
1-3 PRODUCT FEATURES	2
1-4 HARDWARE ENVIRONMENTAL EXPLANATION.....	3
1-5 POWER ENVIRONMENTAL EXPLANATION.....	4
1-6 HARDWARE INSTALLATION	4
1-7 PRODUCT PACKAGING	5
二、WEBPAGE OPERATION	6
2-1 ONLINE SETUP.....	6
2-2 NETWORK SETUP.....	7
2-3 TIME SYNCHRONIZATION.....	9
2-4 POWER MONITOR	10
2-4-1 Power Switch Setup	10
2-4-2 Power Switch Operation	11
三、ADVANCEMENT SETUP.....	12
3-1 POWER MONITOR	12
3-1-1 Warning Temperature Setup	12
3-1-2 Power Operation	13
3-1-3 Power Configuration Setup.....	13
3-1-4 Working Schedule	14
3-1-5 Network Detect	14
3-1-6 Temperature Monitor	15
3-1-7 Voice File Sending	16
3-2 SYSTEM SETUP	16
3-2-1 Network Setup.....	16
3-2-2 Email Server Setup.....	18
3-2-3 Message Server Setup	19
3-2-4 SNMP Setup.....	20
3-2-5 Other Setups.....	21
3-3 FIREWALL.....	22
3-3-1 IP Filter.....	22
3-3-2 MAC Filter	23
3-4 ACCOUNT MANAGEMENT	23

3-4-1 Account Add	23
3-4-2 Account Delete.....	24
3-5 TIME SIMULTANEITY.....	25
3-6 EVENT RECORD	27
3-7 FIRMWARE UPGRADE	27
3-7-1 Firmware Upgrade	27
3-7-2 Download / Reset Configuration.....	29
四 、 PHONETIC OPERATION PROCEDURE.....	32
4-1 MAIN PROCEDURE.....	33
4-2 POWER CONTROL PROCEDURE	34
ATTACHMENT (A): HOW TO RETURN SMARTPOWER SETUP TO INITIAL VALUE.	35
ATTACHMENT(B): HOW TO USE TAPE RECORDER TO RECORD EQUIPMENT VOICE	
FILE.....	36

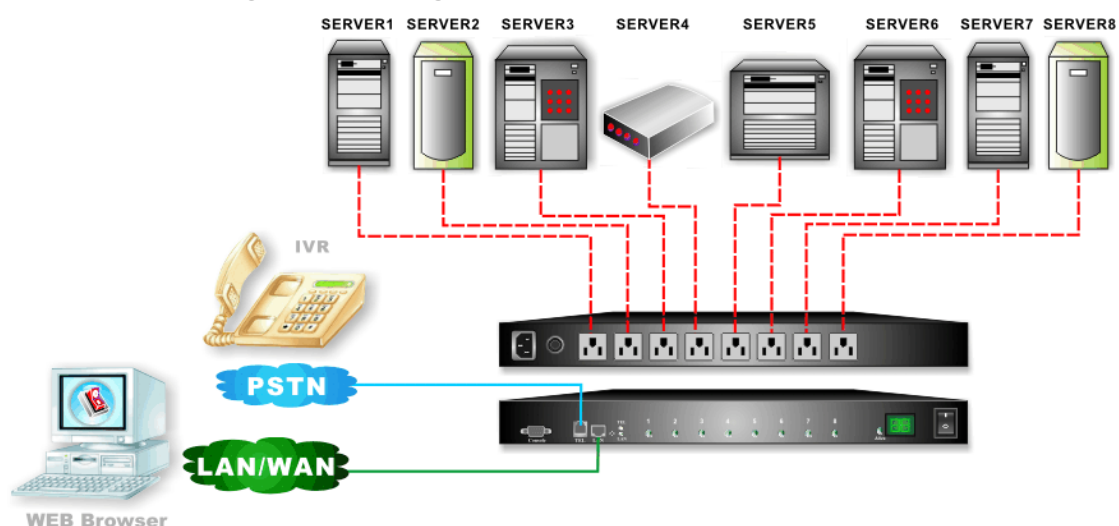
一、Product Introduction

The MIS personnel of lots of enterprises, after coming back to the office because of the network or the computer equipment system halted during their vacations, often find that only needs to reboot the power to solve the problem. So SmartPower integrates the power control, the electric current monitor, equipment temperature control , UPS control , webpage management , voice control, messages, E-mail and API function to let MIS personnel learn the power state of the equipment as soon as possible and can deal with the relevant problem with voice or network far to solve the problem. It reduces the enterprise's losses as well as saves MIS personnel's traveling time.

1-1 Range of Application

- ✚ The monitoring and management of the computer equipment room.
- ✚ The power management of the computer centers of every organization.
- ✚ The machinery equipment power control of the factory building.
- ✚ The network equipment power monitoring.
- ✚ Other power equipment power monitoring.

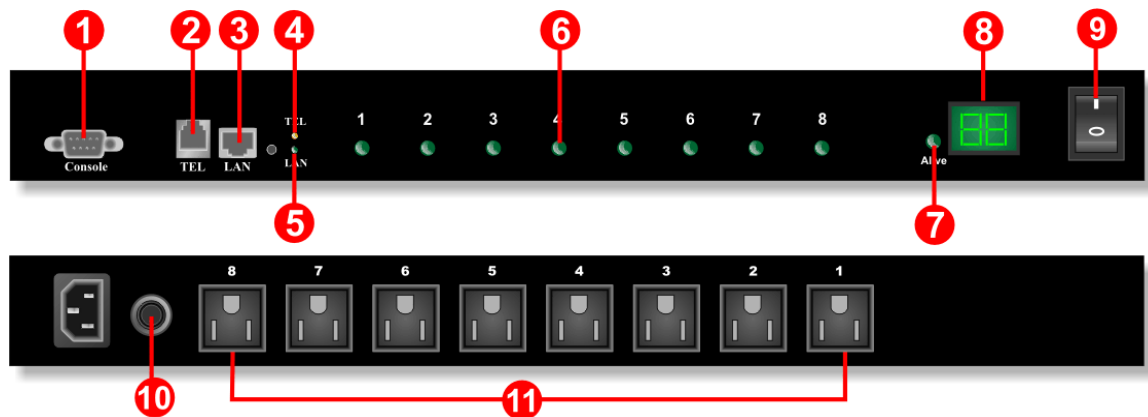
1-2 Monitoring Indicating Chart



1-3 Product Features

- + Control Power Switch of Remote Equipment via network or phone voice to replace the presence of the personnel.
- + LED panel to inspect total current.
- + It is equipped with overloading electric breaking protector to avoid overloading to cause device damage.
- + Auto on / off power switch with surrounding temp. by bulid-in temp. Sensor.
- + Execute Power On / Off / Reboot via Console to manage its performance.
- + Support Power Start sequence setting to prevent all of switches from starting simultaneously to cause sudden overloading and effect equipment working.
- + Provide 4 sets of accounts and passwords for your own setting to manage different power switches.
- + Pre-set Switch Start Time and arrange the working schedule for power supply.
- + By brief message and email warning to practice the instant surveillance and warning to important equipment.
- + Record the user's operating message and abnormal message to provide the user to check the case afterwards.
- + Provide API interface. The manager can develop the control software by himself.
- + Provide remote net firmware to renew the function.
- + Provide the function of IP and MAC address flitter that prevent unauthorized user from access the device.

1-4 Hardware Environmental Explanation

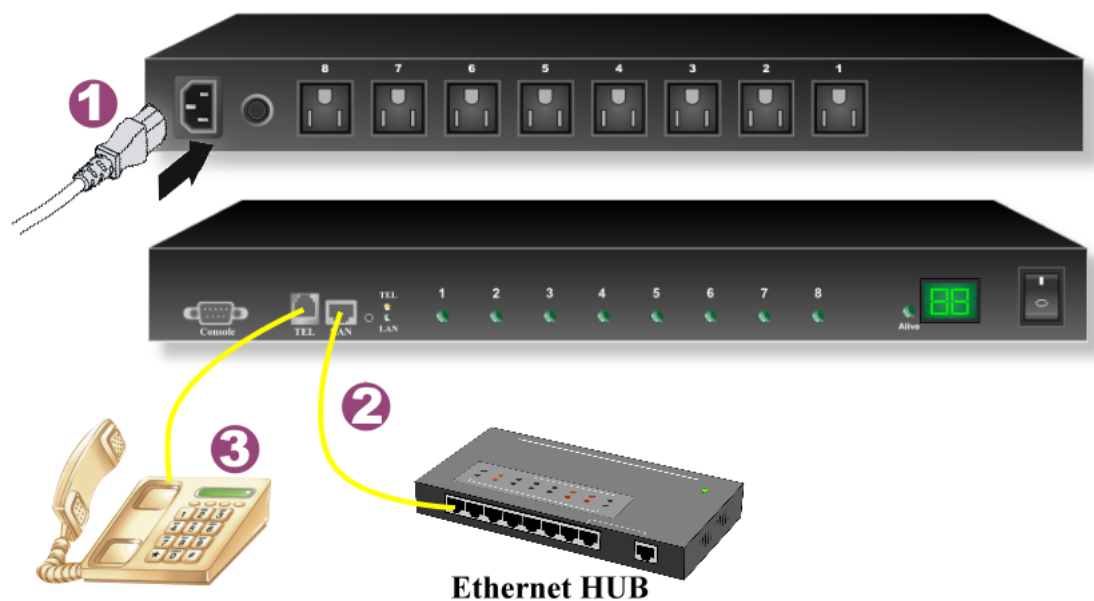


1	Console Connect Port (RS232)	7	Device running Indicating Light
2	Phone Line Connect Port	8	Total Current Indication
3	RJ45 Network Connect Port	9	Main Power Switch
4	Phone Indicating Light	10	Breaker Protector
5	Network Indicating Light	11	Power Switch Socket
6	Power Switch Indicating Light		

1-5 Power Environmental Explanation

Power Socket	NEMA-15R
Max. Main Output Current	15 Amp
Power Input	85~264VAC 47~63Hz
Power Frequency	50 - 60 HZ
Operating Temp.	0 – 60 °C
Shape Size	445 x 155 x 44 mm (W x D x H)
Machine Net Weight	2.5 KG
Consumption Efficiency	9 W

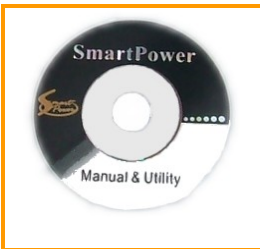
1-6 Hardware Installation



1-7 Product Packaging



Remote Power Monitor * 1



CD Rom of User's Manual * 1



Power Supply Cord * 1

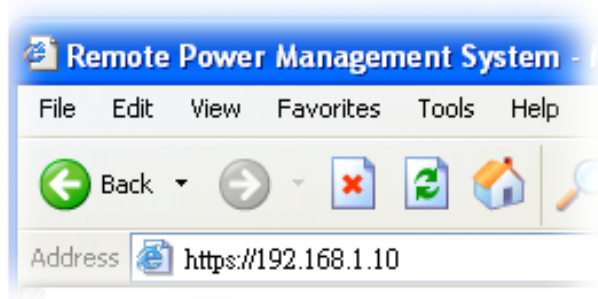
If any of the above accessories are missed or can't be used, please contact with the location you purchased for replacement in 7 days.

二、Webpage Operation

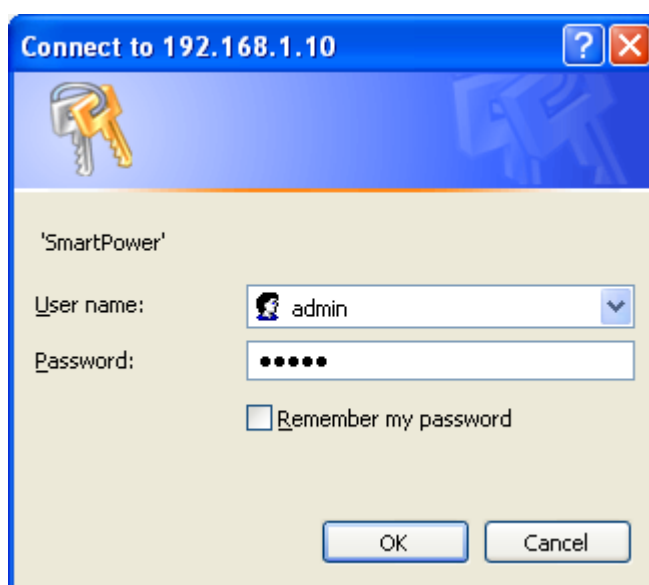
In this Chapter, you can learn how to setup network data , equipment time, power basic data and how to operate power switch via network quickly.

2-1 Online Setup

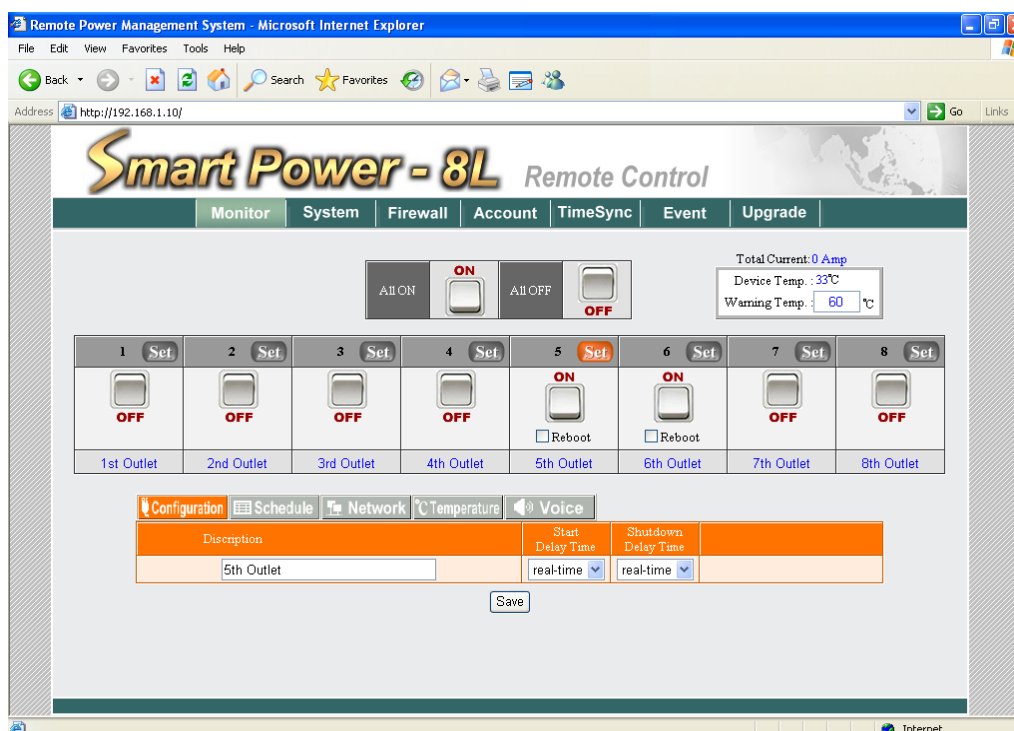
- ① After line, make sure to input <https://192.168.1.10> to connect with webpage manager.



- ② After the logging screen appears, please key in “admin” as user’s name and key in “admin” in the blank of password.



- ③ When you key in the correct user's name and password as the instruction of Step ②, you can enter this screen.



2-2 Network Setup

After you select function 【System】 in homepage, choose 【Network】 .

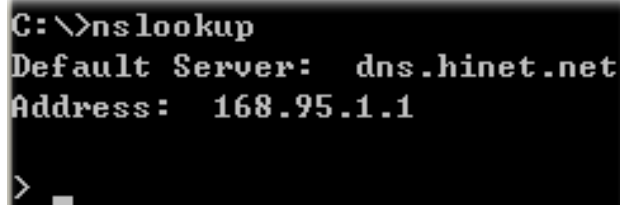
Network	Mail Server	SMS Server	SNMP
Network Setup			
1	IP Address	192.168.1.10	
	Subnet Mask	255.255.255.0	
	Gateway	192.168.1.1	
Domain Name Server Setup			
2	DNS Server 1	168.95.1.1	
	DNS Server 2		
Web Server Setup			
3	Http Port Open	<input checked="" type="checkbox"/>	
	Http Port	80	
	Http SSL port	443	
	API port	12345	
4	Save		

1 Network Setup

Please fill in IP site, sub network shade, preset communication gate data offered by the service center of the supplier according to your network setup state to input the data. If you don't have relevant data on hand , please inquire to your ISP service center. This product only provides for the establishment of regular IP. If your connect type to surf the Net is by dialing, please cooperate to use with IP Hub.

2 Domain Name Server Setup

Please fill in your DNS server provided by ISP service center. You can setup two sets of DNS servers. If you don't know DNS server site, you may check your DNS service by input C : \>nslookup in "Subsidiary application program →Order prompted character.



```
C:\>nslookup
Default Server:  dns.hinet.net
Address:  168.95.1.1
> _
```

3 Web Server Setup

When you connect with SmartPower through webpage browser (e.g. IE), if you do not want to use the decided HTTPS connect port (normally for 443), you may change HTTPS connect port to be other value (e.g. 8080), and then you may re-connect to SmartPower and input the HTTP connect port you appointed. (e.g. https://192.168.1.10:8080)

4 When you finish setup for the above data, please make sure to press the key of 「 Save 」 to store all of the data setup.

2-3 Time Synchronization

The time zone that SmartPower adopts is for 24 hours, and will regard this time as the time basis that information will be recorded. When you use for the first time, you can choose【TimeSync】from function form in webpage. After selecting, you can proceed the setup of time synchronization.

Equipment Time	
Equipment Date (yyyy-mm-dd)	2007-08-16
Equipment Time (hh:mm:ss)	09:37:10

System Time	
<input checked="" type="radio"/> Sync with PC	
PC Date (yyyy-mm-dd) :	2007-08-16
PC Time (hh:mm:ss) :	09:36:57
<input type="radio"/> Sync with NTP Server	
NTP Server Address :	time.stdtime.gov.tw <input type="button" value="New"/>
<input type="radio"/> Manual Setup	
Date (yyyy-mm-dd) :	2007-08-16
Time (hh:mm:ss) :	09:36:51

Time Zone Setup	
Time Zone : GMT	+ <input type="button" value="v"/> 08 <input type="button" value="v"/> : 00 <input type="button" value="v"/>

Equipment Time Setup is divided into three types. Please choose one to setup as you want :

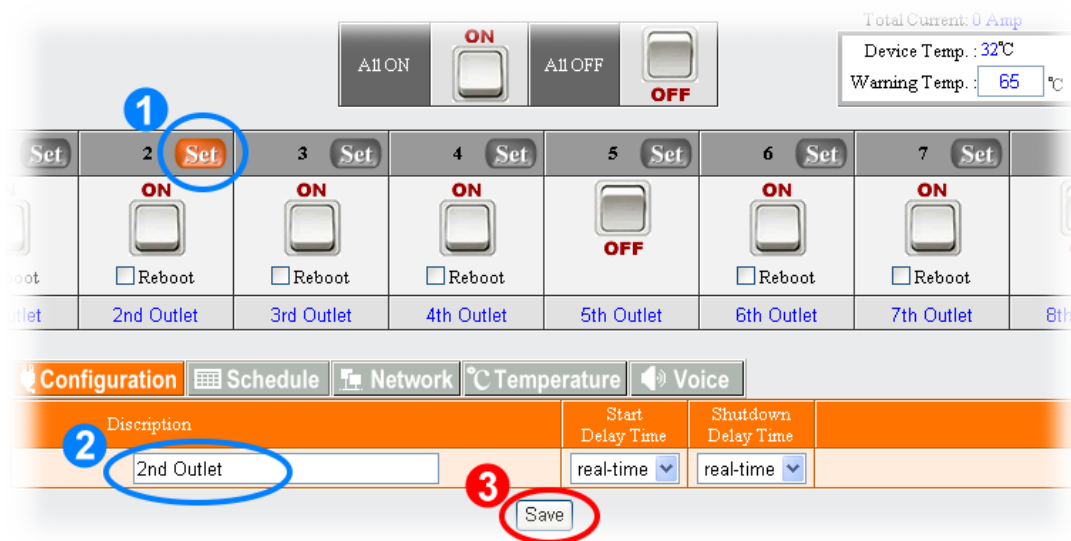
- Sync with PC :
SmartPower will setup the time of equipment system as the computer date and time display as in the webpage.
- Sync with NTP Server :
Choose to setup the same time as Server.
- Manual Setup :
You may also setup SmartPower system time by manual. Just keyin the date and time you want to setup in the columns of Date and Time.

* When you finish setup for the above data, please make sure to press the key of 「Save」 to store all of the data setup.

2-4 Power Monitor

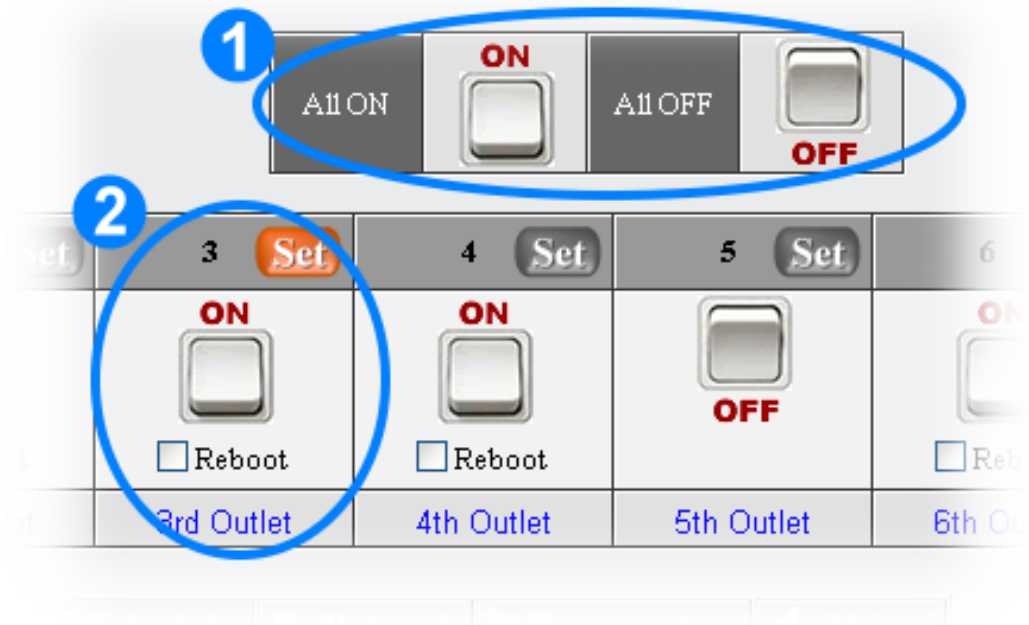
After setup the above Webpage, you can choose 【Monitor】 in Webpage Management Function List. In this page, you may not only operate Power Switch but also setup the relative data in every route of Power Equipment.

2-4-1 Power Switch Setup



- 1** When you press 「Set」 button to turn orange, it means you will setup that Power data.
- 2** Move Mouse to the explanation colum of Power Setup and keyin the explanation date of this Route Power Equipment.
- 3** When you finish setup for the above data, please make sure to press the key of 「Save」 to store all of the data setup.

2-4-2 Power Switch Operation



- 1 Press left key of Mouse twice to open or close all of the Equipment Power.
- 2 Display all route Power Status and Data, and may use Mouse to press its left key twice to switch the Power. If you want to reboot the equipment, please mark the item "Reboot" and then use Mouse to press left key twice.

三、Advancement Setup

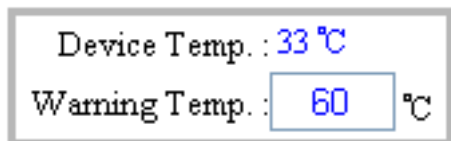
This chapter is mainly to explain the advancement operation in SmartPower webpage. You may learn about Power Monitor, System Setup, Account Management, Time Synchronization, Event Record and Firmware Upgrade...the detailed explanation for all of these functions.

3-1 Power Monitor

In this webpage, you may proceed the setup for Basic Data, Working Schedule, Network Detect, Temperature Monitor through browser operation for power switch and Voice Sending...

3-1-1 Warning Temperature Setup

This block is to display the total current , present device temperature and setup the warning temperature.



The screenshot shows a web interface for temperature monitoring. It contains two lines of text: "Device Temp. : 33 °C" and "Warning Temp. : 60 °C". The "60" is inside a text input box, indicating it is a configurable value.

Device Temperature : Display the current temperature of SmartPower. Temperature will change according to the surrounding temperature. If the environment temperature rises, the temperature of SmartPower will rise too.




Warning Temperature : If you connect temperature detector to setup a basic warning temperature, when the equipment temperature rises to this temperature, the system will send the warning message by setup email and message to all of the user's accounts.

* When you finish setup for the above data, please make sure to press the key of 「Save」 to store all of the data setup.

3-1-2 Power Operation

Every route power provides the explanation for Power Data Setup, Power ON, Power OFF, Power Reboot, and Power Equipment.



Button Illustration :  ON 、  OFF 、  Not

Authorized 、  No Power

3-1-3 Power Configuration Setup

The main purpose for Power Set List is to setup the relative data for all routes' power switches.

Configuration			
Schedule			
Network			
°C Temperature			
Voice			
Discription		Start Delay Time	Shutdown Delay Time
1st Outlet		real-time	real-time

Description : The description for all routes of Power Switch equipment, after setup, it will reveal under switch column for convenience of the manager to distinguish the equipment name connected with all routes' power.

Start Delay Time : When Power is ON, it is time to wait for Power Start Delay Time.

Shutdown Delay Time : When Power is OFF, it is time to wait for Power Shutdown Delay Time.

3-1-4 Working Schedule

You may select the working schedule for setup the power equipment ON or OFF here.

Configuration	Schedule	Network	Temperature	Voice
Recurrence	Time	Action	Delete	
Week	Sunday 00:08	Off		
Daily	09:09	Reboot		

Recurrence: :

Recurrence : you can select the action recurrence of this route's power. The recurrence can be divided into year, month, week, day. For example, If the recurrence is by "day", it means this route's power will activate at set time each day.

Time : Setup the working time of this route's power. It is dragged to the page bottom.

Action : Setup this route's power's working schedule is "on", "off" or "reboot".

Delete : If you want to delete this schedule, please double-press the deleting illustration of this schedule.

3-1-5 Network Detect

When the Power Connected equipment is the web equipment, you can setup the monitored web equipment site, monitoring interval time, detective numbers of times, reboot or not and re-detect time.

Configuration	Schedule	Network	Temperature	Voice	
Detect	Equipment Network Address	PING Interval Time	Detect Times	Reboot	Re-detect Time
<input type="checkbox"/>	<input type="text" value="192.168.1.10"/>	<input type="text" value="5"/> Min	<input type="text" value="3"/>	<input type="checkbox"/>	<input type="text" value="10"/> Min

Detect : When the Power connected equipment is the web equipment, whether detect or not.

Equipment Network Address : When the Power connected equipment is the web equipment, it is the monitored web equipment site.

PING Interval Time : When the Power connected equipment is web equipment, it is the Interval Time to execute PING network equipment.

Detect Times : When PING failed detecting time is over this setup value, it will send the warning message through the set message or email.

Reboot : When PING failed detecting time is over this setup value, whether the web equipment shall be re-started or not.

Re-detect Time : When re-start the web equipment, delay the equipment time and then re-monitor the web equipment.

3-1-6 Temperature Monitor

When detect the temperature of SmartPower is abnormal, is it necessary to proceed the action of open or close the power switch?

Configuration	Schedule	Network	Temperature	Voice
Power Shutdown	Continuous Time	Power Start		
50 °C	10 Sec	40 °C		

Power Shutdown : When the equipment power temperature is over than the setup temperature, if it exceeds the continuous time, the route of power will be close automatically.

Continuous Time:When the temperature of equipment power is over than the setup temperature for power off, if it is over the setup continuous time, this route power will be close automatically.

Power Start : If the equipment power had been close because of high temperature, when the temperature is lower than the setup temperature, this route power equipment will re-start automatically.

3-1-7 Voice File Sending

The user can record the voice file by sending to point out the equipment name for present power switch connected when operate by phone.



Press 「BROWSE」 button to open File Select window and choose the voice file you will send, and then press 「Begin Upload」.

The Voice File Form is PCM/A-Law/u-Law 8K 8Bit and less than 40K (about 5 seconds).

In regards to the recording operation for Voice File, please refer to [Attachment B](#).

3-2 System Setup

In this webpage you may setup telephone answering numbers, web basic data, email server and message service... setup for all of the relative data.

3-2-1 Network Setup

Setup Network basic data.

Network		Mail Server	SMS Server	SNMP
Network Setup				
IP Address	192.168.1.10			
Subnet Mask	255.255.255.0			
Gateway	192.168.1.1			
Domain Name Server Setup				
DNS Server 1	168.95.1.1			
DNS Server 2				
Web Server Setup				
Http Port Open	<input checked="" type="checkbox"/>			
Http Port	80			
Http SSL port	443			
API port	12345			
Save				

IP Address : Setup to connect with Network IP address of this equipment.

Subnet Mask : Setup Network mask of this equipment.

Gateway : Setup exterior Gateway Site of this equipment.

DNS Server 1 : The site of the first Web Area Server.

DNS Server 2 : The site of the second Web Area Server.

Http Port Open : Marking this column means that allow user can open browser to connect the device by http protocol.

Http Port : Provide the browser to be connected with the appointed Http port to this equipment.

Http SSL Port : Provide the browser to be connected with the appointed Http SSL port to this equipment.

API Port : Provide the Application Program to be connected with the appointed connect port to this equipment. This product provides API for the user to develop program connected with this equipment to get the power, electric current, temperature status and control power (please refer to the explanation 6-3.) You must setup the network vent connecting the program with this equipment.

3-2-2 Email Server Setup

When there is a warning , the email service data setup for sending the warning case.

Email Server Setup	
SMTP Server Address	mail.bellwin.com.tw
SMTP Port	25
Sender Mail Address	smartpower@bellwin.com.tw
Mail Subject	smartpower Warning
SMTP Auth	<input checked="" type="checkbox"/>
SMTP Account	admin
SMTP Password	•••••
<div>Mail Test</div>	
<div>Save</div>	

SMTP Server Address : When the warning message is sent by email, you must help to send out the email to the main server address.

SMTP Port : When the warning is sent by email, you must help to send out the email to main server connect port. The preset value is 25.

Sender Mail Address : When the Receiver gets the email, it will be revealed in sender's data of email.

Mail Subject : When the Receiver gets the email, it will be revealed in Subject data of email.

SMTP Auth : If the setup mail server needs to identify the user, please mark this item and setup the account and password.

SMTP Account : Loaded account for email server.

SMTP Password : Loaded password for email server.

3-2-3 Message Server Setup

When there is a warning , setup the warning message data in the Message Server.

Message Server Setup	
Server Address	192.168.1.4
Port	2500
Equipment Name	Remote Power Management System
Account	admin
Password	••••••••
Send SMS	<input checked="" type="checkbox"/>
<div>SMS Test</div>	
<div>Save</div>	

Server Address : When the warning system is sending the message, it helps to send the message to the server address.

Port : When the warning system is sending the message, it helps to send the message to the server main connect port. The preset value is 2500.

Equipment Name : When the receiver gets the message, it will be revealed in the data of Message Sender.

Account : Account to load in Message Server.

Password : Password to load in Message Server.

Send SMS : If it is needed to start Message Sending mechanic.

3-2-4 SNMP Setup

Network		Mail Server		SMS Server		SNMP		Other	
MIB System									
System Name		SmartPower 4L							
System Contact		Administrator							
System Location		Office							
TRAP Notification									
Receiver IP Address		Receiver Port		Community		Enabled			
192.168.1.213		162		public		<input checked="" type="checkbox"/>			
						<input type="checkbox"/>			
						<input type="checkbox"/>			
						<input type="checkbox"/>			
						<input type="checkbox"/>			
						<input type="checkbox"/>			
						<input type="checkbox"/>			
						<input type="checkbox"/>			
						<input type="checkbox"/>			

System Name : Display System Name on the program of SNMP Client.

System Contact : Display System Contact Person on the program of SNMP Client.

System Location : Display System Site on the program of SNMP Client.

Receiver IP Address : When something happens to Trap and it is IP site which will be sent to Trap.

Receiver Port : When something happens to Trap and intends to send to Trap server, it is the Connect Port for Trap server. The inner setup value is 162.

Community : When something happens to Trap and intends to transmit to Trap server, the group will be sent to Trap server.

Enabled : While mark the using option, if something happens to Trap, Trap Case Information will be sent to the appointed Trap server.

3-2-5 Other Setups

You may setup when the user enters by phone, the system will execute IVR process after several rings. When SmartPower is connected with other phone, you can setup the larger ring-answering value for convenience of the user to answer the phone firstly. When the phone is nobody answered, SmartPower will answer it then.

Network		Mail Server		SMS Server		SNMP		Other	
Ring Setup									
Answer Ring				<input type="text" value="1"/>					
Reboot power switch									
Reboot Option				<input type="checkbox"/>					
<input type="checkbox"/> Reboot Device									
<div>Save</div>									

[Answering Ring Setup](#) : Setup the answering ring times.

[Reboot Power Switch](#) : Setup if the selection of Power Switch Reboot is on START or not.

[Reboot Device](#) : Reboot the SmartPower.

3-3 Firewall

Choose **firewall** in Webpage Management Function List, then configure the IP and MAC address filter value to authorize the specific user to control the device.

3-3-1 IP Filter

IP Filter	MAC Filter
IP Filter Setup	
IP Filter Open	<input checked="" type="checkbox"/>
Allow IP Address	Delete
192.168.1.202 ~ 192.168.1.202	X

192 . 168 . 1 . 202 ~ 205 ADD

Save

IP filter setup : If this option is enable, its means that just authorize some specific IP address to control the device.

Allow IP address : Five of four column means the begin of net address sector and the end of column means the end of net address sector which you authorized. For example, you like to authorize the net sector for 192.168.1.100 to 192.168.1.200, than you just need input 192.168.1.100~200 in those five column. If you just authorize only one IP address, than you fill the same address in the begin and end column. For example, if you like to authorize 192.168.1.100 to access the device, than you can input 192.168.1.100~100 in those five column. When you open the page with browser from device, the browser will show the IP address of the computer which you are using in the column of authorize IP address sector automatically.

3-3-2 MAC Filter

IP Filter

MAC Filter

MAC Filter Setup	
MAC Filter Open	<input checked="" type="checkbox"/>
Allow MAC Address	Delete
00:10:B5:D3:35:85	<input checked="" type="checkbox"/>

00

:

10

:

B5

:

D3

:

35

:

85

ADD

Save

MAC filter setup : Enable the option, it means that you authorize some specific computer to access the device.

Allow MAC address : All of six column please fill in the MAC address of ethernet card. For instance, if you like to authorize 00:10:B5:D3:35:85 serial number of ethernet card to access the device, than you need fill 00:10:B5:D3:35:85 to the column. When you open the browser of this page from device, the browser will show the serial number of ethernet card which you are using in the column automatically.

3-4 Account Management

Choose **Account** in Webpage Management Function List, and then proceed the Account Management. You may setup 8 sets of accounts in total.

3-4-1 Account Add

ID	Account	Password	TEL Password	Cellphone	Mail Address	1	2	3	4	5	6	7	8	Del
1	admin	•••••	•••••		admin@bellwin.com.tw	<input checked="" type="checkbox"/>	<input checked="" type="checkbox"/>	<input checked="" type="checkbox"/>	<input checked="" type="checkbox"/>	<input checked="" type="checkbox"/>	<input checked="" type="checkbox"/>	<input checked="" type="checkbox"/>	<input checked="" type="checkbox"/>	<input type="checkbox"/>
2						<input type="checkbox"/>	<input type="checkbox"/>	<input type="checkbox"/>	<input type="checkbox"/>	<input type="checkbox"/>	<input type="checkbox"/>	<input type="checkbox"/>	<input type="checkbox"/>	<input type="checkbox"/>
3						<input type="checkbox"/>	<input type="checkbox"/>	<input type="checkbox"/>	<input type="checkbox"/>	<input type="checkbox"/>	<input type="checkbox"/>	<input type="checkbox"/>	<input type="checkbox"/>	<input type="checkbox"/>

Account : When enter the webpage, it will request to input User's account.

Password : When enter the webpage, it will request to input User's password.

TEL Password : When operate by phone, the phone voice will request to input the password for six digits.

Cellphone : When there is a warning , the mobile phone number it will transmit to.

Mail Address : When there is a warning case, the email address it will transmit to.

You may setup the using authorization for all routes power switch according to each account setup.

	1	2	3	4	5	6	7	8	Del
<input type="text"/>	<input checked="" type="checkbox"/>	<input checked="" type="checkbox"/>	<input checked="" type="checkbox"/>	<input checked="" type="checkbox"/>	<input checked="" type="checkbox"/>	<input checked="" type="checkbox"/>	<input checked="" type="checkbox"/>	<input checked="" type="checkbox"/>	<input type="checkbox"/>
<input type="text"/>	<input checked="" type="checkbox"/>	<input checked="" type="checkbox"/>	<input type="checkbox"/>	<input type="checkbox"/>	<input type="checkbox"/>	<input checked="" type="checkbox"/>	<input type="checkbox"/>	<input type="checkbox"/>	<input type="checkbox"/>
<input type="text"/>	<input type="checkbox"/>	<input type="checkbox"/>	<input type="checkbox"/>	<input type="checkbox"/>	<input type="checkbox"/>	<input type="checkbox"/>	<input type="checkbox"/>	<input type="checkbox"/>	<input type="checkbox"/>

3-4-2 Account Delete

Mail Address	1	2	3	4	5	6	7	8	Del
<input type="text"/>	<input checked="" type="checkbox"/>	<input checked="" type="checkbox"/>	<input checked="" type="checkbox"/>	<input checked="" type="checkbox"/>	<input checked="" type="checkbox"/>	<input checked="" type="checkbox"/>	<input checked="" type="checkbox"/>	<input checked="" type="checkbox"/>	<input type="checkbox"/>
<input type="text"/>	<input checked="" type="checkbox"/>	<input checked="" type="checkbox"/>	<input checked="" type="checkbox"/>	<input checked="" type="checkbox"/>	<input type="checkbox"/>	<input type="checkbox"/>	<input type="checkbox"/>	<input type="checkbox"/>	<input type="checkbox"/>
<input type="text"/>	<input type="checkbox"/>	<input type="checkbox"/>	<input type="checkbox"/>	<input type="checkbox"/>	<input checked="" type="checkbox"/>	<input checked="" type="checkbox"/>	<input type="checkbox"/>	<input type="checkbox"/>	<input checked="" type="checkbox"/>
<input type="text"/>	<input type="checkbox"/>	<input type="checkbox"/>	<input type="checkbox"/>	<input type="checkbox"/>	<input type="checkbox"/>	<input type="checkbox"/>	<input type="checkbox"/>	<input type="checkbox"/>	<input type="checkbox"/>
<input type="text"/>	<input type="checkbox"/>	<input type="checkbox"/>	<input type="checkbox"/>	<input type="checkbox"/>	<input type="checkbox"/>	<input type="checkbox"/>	<input type="checkbox"/>	<input type="checkbox"/>	<input type="checkbox"/>
<input type="text"/>	<input type="checkbox"/>	<input type="checkbox"/>	<input type="checkbox"/>	<input type="checkbox"/>	<input type="checkbox"/>	<input type="checkbox"/>	<input type="checkbox"/>	<input type="checkbox"/>	<input type="checkbox"/>

3

2

- ① Choose and mark to delete User's Data.
- ② Press 「Delete」 button to proceed the action of deleting User's Data.
- ③ After deleting the data, you must press 「Save」 button to store the deleting setup really.

3-5 Time Simultaneity

Equipment Time	
Equipment Date (yyyy-mm-dd)	2007-08-16
Equipment Time (hh:mm:ss)	09:37:10

System Time	
<input checked="" type="radio"/> Sync with PC	
PC Date (yyyy-mm-dd) :	2007-08-16
PC Time (hh:mm:ss) :	09:36:57
<input type="radio"/> Sync with NTP Server	
NTP Server Address :	time.stdtime.gov.tw <input type="button" value="New"/>
<input type="radio"/> Manual Setup	
Date (yyyy-mm-dd) :	2007-08-16
Time (hh:mm:ss) :	09:36:51

Time Zone Setup	
Time Zone : GMT	+ <input type="button" value="v"/> 08 <input type="button" value="v"/> : 00 <input type="button" value="v"/>

Equipment Date : The system date of SmartPower Device.

Equipment Time : The system time of SmartPower Device.

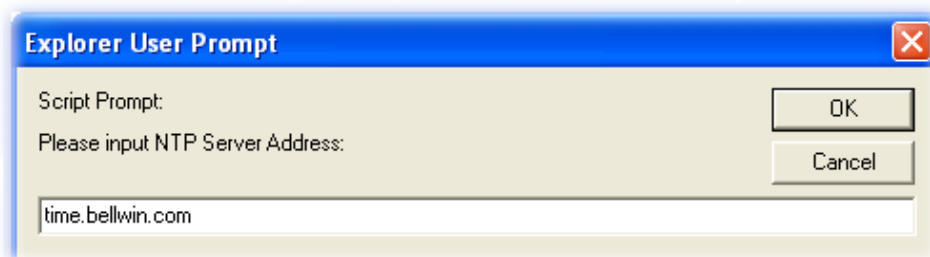
Sync with PC : If you choose this item, the equipment time and computer system time will be identical.

PC Date : The current Computer System Date.

PC Time : The current Computer System Time.

Sync with NTP Server : If you choose this item, the equipment time and Time Server will be identical.

NTP Server Address : SmartPower presets several Time Servers for choice. If there is not the Time Server you want in the Time Server list, you may re-add Time Server by yourself and then setup the time. Press 「New」 button, when the window below appears, input the NTP server address and then press 「OK」.



Manual Setup : If you choose this item, the equipment time will be setup manually.

Date : Keyin the date manually. Please keyin by the correct Date Form.

Time : Keyin the time manually. Please keyin by the correct Time Form.

Time Zone : This time area is relative to Greenwich time. The time for the normal time server is simultaneous with Greenwich Time. So it is needed to adjust to local time.

3-6 Event Record

In this Webpage, you may check the operation and warning events in the recent 7 days. You may see the action time and operated reason for each Power Switch. At the same time, if Power Switch can't be operated normally, it will produce warning case.

☒ Operated Event
☐ Warning Event

Date:

Time	Message
2006/03/21 09:43:58	Software Reboot
2006/03/21 09:48:53	Port:1[First Outlet]Power On
2006/03/21 09:48:53	Port:2[Second Outlet]Power On
2006/03/21 09:48:54	Port:3[Third Outlet]Power Off
2006/03/21 09:48:54	Port:4[Fourth Outlet]Power Off
2006/03/21 09:48:55	Port:5[Fifth Outlet]Power Off
2006/03/21 09:48:55	Port:6[Sixth Outlet]Power Off
2006/03/21 09:48:57	Port:6[Sixth Outlet]Power On
2006/03/21 09:48:58	Port:5[Fifth Outlet]Power On
2006/03/21 09:48:59	Port:4[Fourth Outlet]Power On
2006/03/21 09:48:59	Port:3[Third Outlet]Power On
2006/03/21 09:49:00	Port:2[Second Outlet]Power Off
2006/03/21 09:49:01	Port:2[Second Outlet]Power On

Click to choose “Operated Event” or “Warning Event” and choose date from date bar, then press "OK" button , It will show the event information.

“Download” button means save the information to be a .csv file in the HD.

“Delete” button means delete the information.

3-7 Firmware Upgrade

You may download the newest Firmware in the website of the supplier to proceed SmartPower Upgrade.

3-7-1 Firmware Upgrade

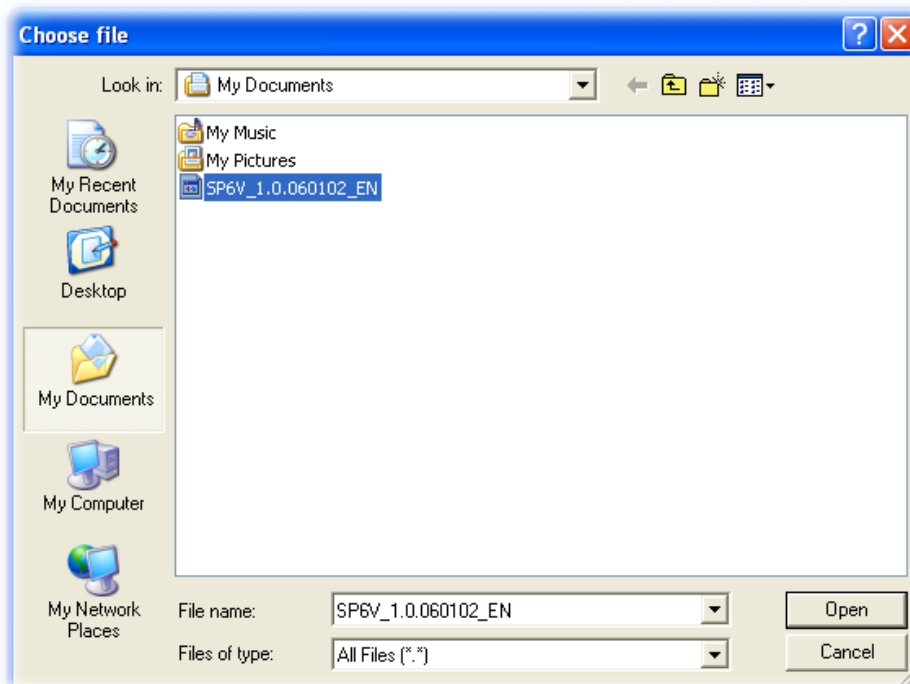
Production Name : SP8L
System Version : 2.00.070412-2

Please Select File:

Steps of Upgrade are as below :

Step 1 : Press 「BROWSE」 button.

Step 2 : Select the catalogue of Firmware Renew File and press 「OPEN」 after selecting the file.

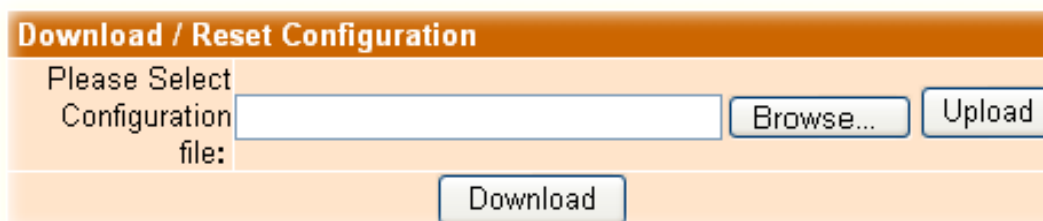


Step3 : By means of upgraded Firmware Function, when you press 「Upgrade Firmware(Upgrade)」 button, it will display according to the following state. Router will re-start automatically and finish the firmware upgraded.



If the file you choose is not Firmware file or it is old-fashioned version, you can't do the action of SmartPower Upgrading.

3-7-2 Download / Reset Configuration

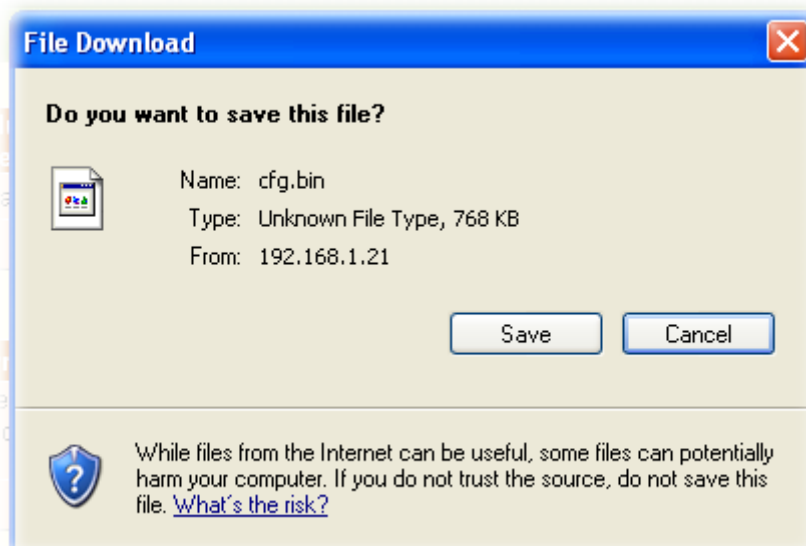


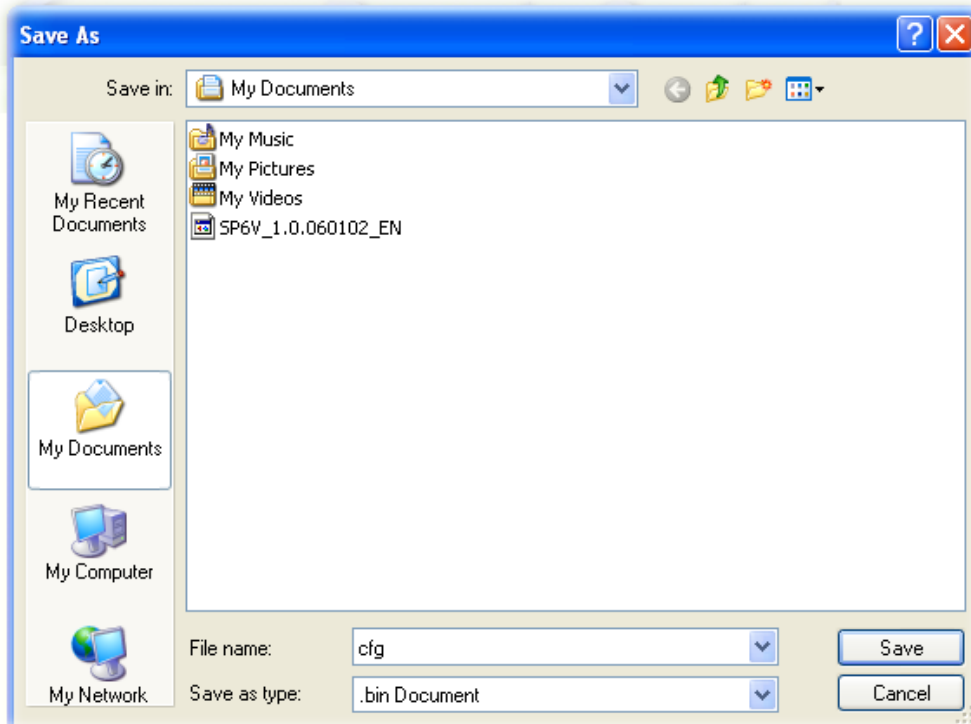
The form has an orange header bar with the text "Download / Reset Configuration". Below the header, on the left, is the text "Please Select Configuration file:". To the right of this text is a white text input field. Further right are two buttons: "Browse..." and "Upload". At the bottom center of the form is a single button labeled "Download".

The steps of Store Setup File are as below :

Step 1 : Press 「Download」 button.

Step 2 : Store Setup File in the catalogue you appointed.

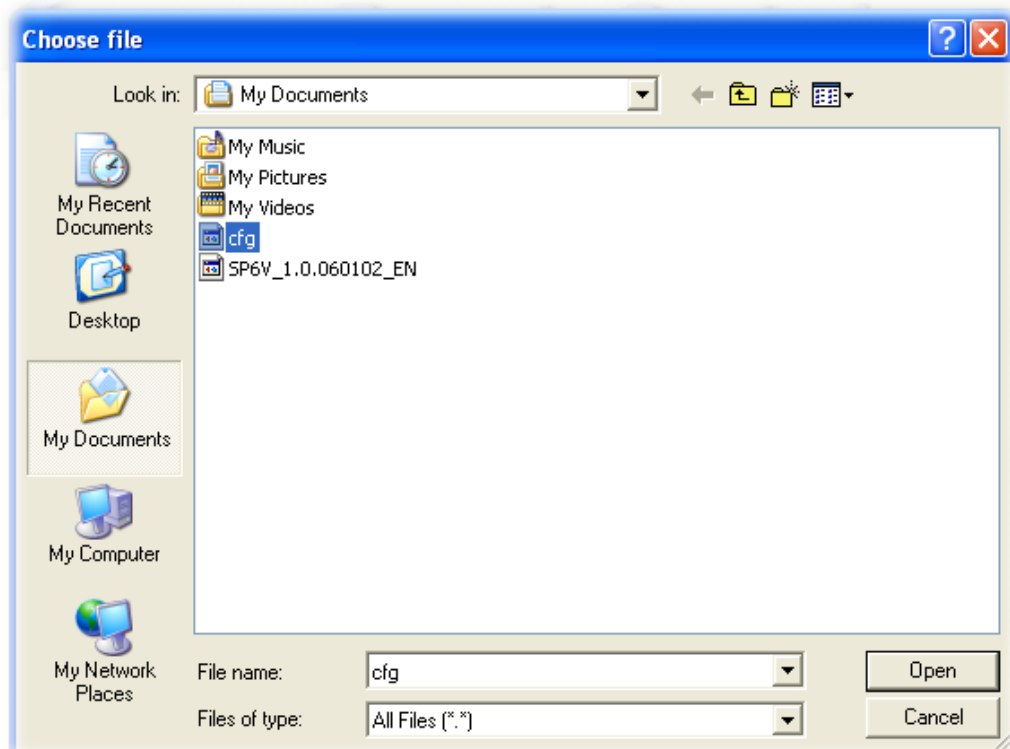




The step to reset configuration are as below :

Step 1 : Press 「BROWSE」 button.

Step 2 : Select the catalogue of Setup File and press 「OPEN」 after selecting.



Step3 : By means of Re-set Setup File Function, when you press 「Upload」 button, it will be displayed according to the following state: SmartPower will reboot automatically, and will finish Setup File Reset.



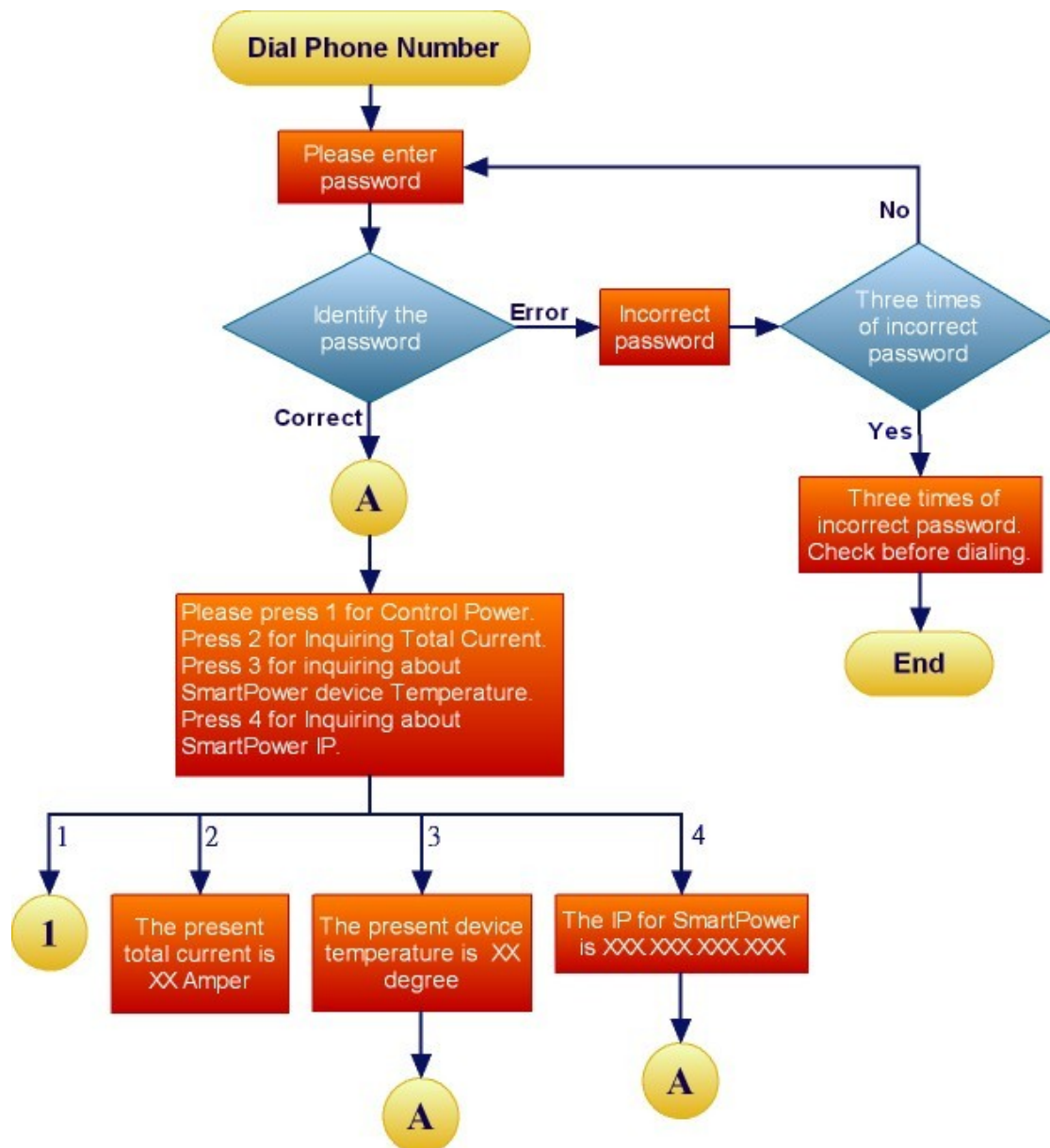
When the file you choose is not SETUP File, you can't proceed the action of SmartPower Setup File Reset.

四、Phonetic Operation Procedure

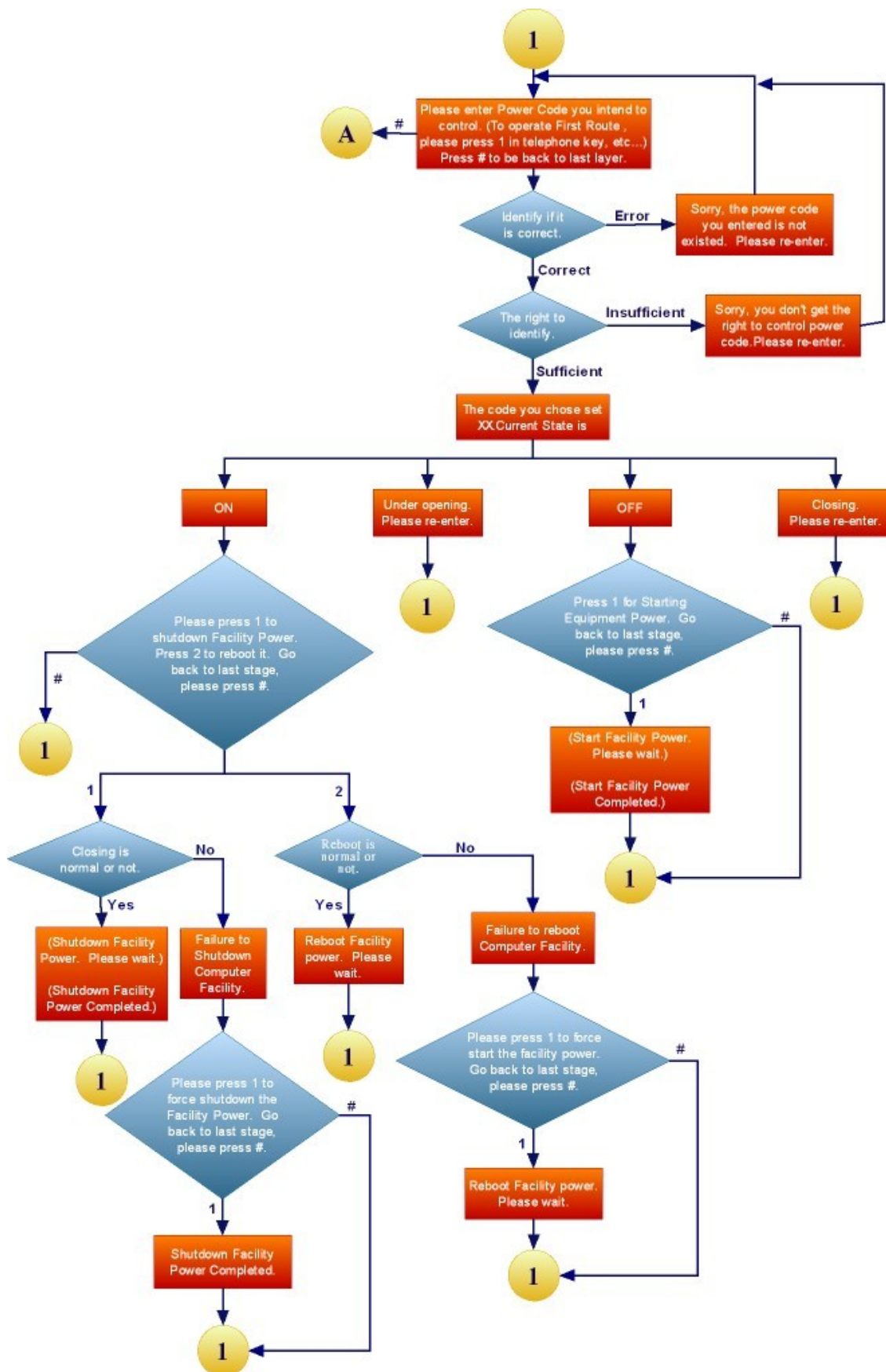
This chapter is mainly to explain the operation procedure for SmartPower Phonetic System. The users can use the phone to dial the voicemail to operate the Power Switch and read the electric current, temperature and website. This chapter is divided into the Main Procedure, the Power Control Procedure, and Power Electric Current Procedure. After finish playing the phone voic for over 5 seconds, if you do not press any key, it will hang up the phone automatically to prevent from phone line jammed.

※ The prompted Phonetic system password for this system account admin is “123456”.

4-1 Main Procedure



4-2 Power Control Procedure



Attachment (A): How to return SmartPower setup to initial value.

When you forget the password of network account of SmartPower, you can utilize “RESET” button of SmartPower to return the initial value. At the same time, SmartPower will carry out the action of reboot, too. Please note, after operating “RESET” button. It will clear up all the users information. Meanwhile, the webpage management account number and password to return to “admin”. And the phone password will be returned to “123456”, the network site will be to “192.168.1.10.” The other data will be remained unchanged.

Use nib or thing to press “Reset” button slightly. After seconds, the phone indicating light will flash and then the machine will be reboot.



Attachment(B): How to use tape recorder to record equipment voice file.

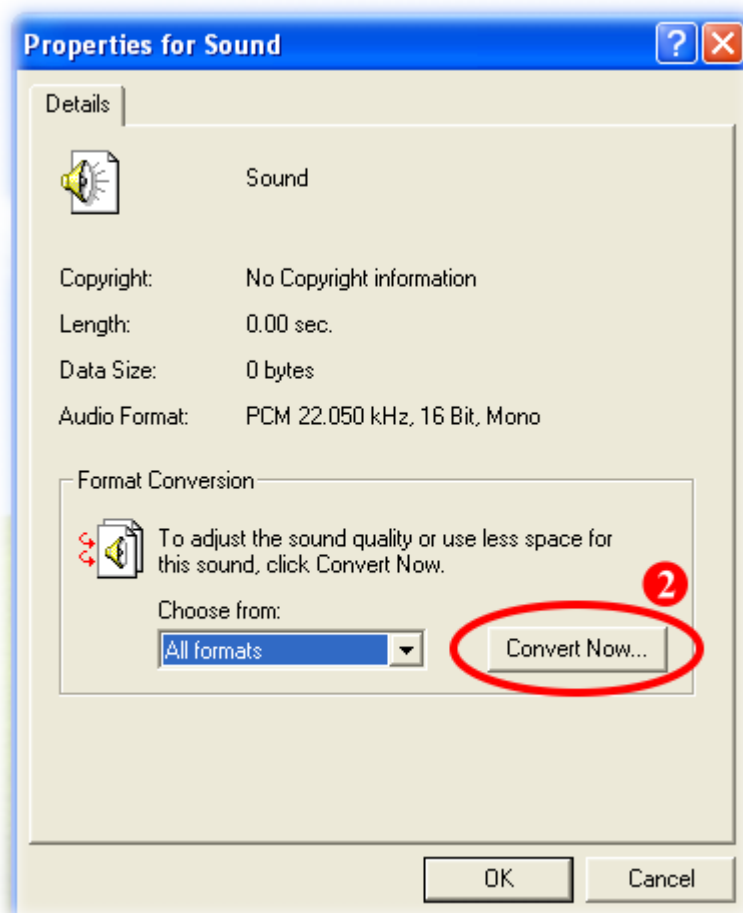
You can utilize recorder procedure of Windows to record equipment voice file and reach it to the equipment of SmartPower.

- 1 Turn on the recorder procedure in Windows to record your equipment voice message.

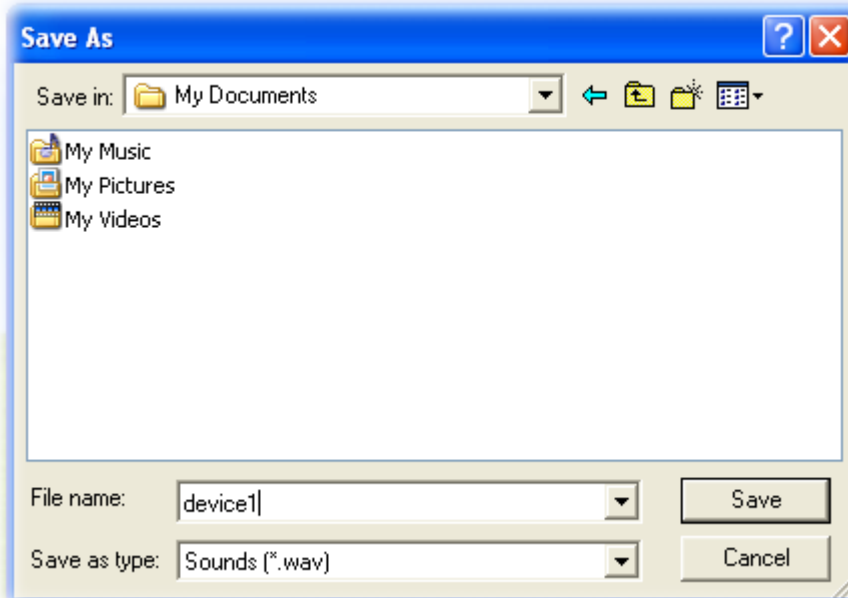


- 2 Turn on the recorder [File / Properties], after selecting, press the voice file content transform to CCITT u-Law 8KHz 8 bytes.





- 3 It will store the recorded equipment voice file to the catalogue you appointed.



- 4 It will store it while reaching SmartPower equipment on the equipment voice file of your computer. (please refer to 3-1-7)

